



Annual Report 2015-16

Network for Youth Development and
Healthy Environment [NYDHEE]

Contents

Women leads the Path to
Strengthening Livelihoods ➤ 02

Children stands for Forest
Conservation with Community ➤ 04

Appropriate WASH for
Healthy Living ➤ 06

Capacity Sharing for Leading
Self & Enabling Others ➤ 08

Our Resources ➤ 10

Who We Are? ➤ 11

Finance Statement ➤ 15

Our Partners ➤ 21



Preface

NYDHEE marked its 15 years' of journey in 2015-16 to being with community and continuing participation in development programmes. Herewith, we're happy to share our participatory experience fighting hunger and food insecurity, and for attaining sustainable progress.

During 2015-16, we reached out to diverse geographical locations – from Coastal Odisha fisher folks in Khurda to North Odisha's forest dwelling communities in Mayurbhanj, also worked with urban slum dwellers in the Capital. We, mostly focused on Environment and Livelihoods generation activities, but with diverse stakeholders like children, teachers, parents, women and women groups. We, successfully mainstreamed environment education programmes along with women empowerment standpoints during this year. And we're sure that in up-coming years, we may harvest enhancing productivity resources held by marginal-small holders, fisher folk and forest communities, and promoting their rural economic integration through well-functioning markets.

Social protection contributes directly to the reduction of hunger and malnutrition. And thus, during this year, increasing human capacities and promoting income security in order to foster local economic development had been prioritized.

During 2015-16, with the immense support from the local community along with funds support from Heifer International (India), Galvmed Koningsschool, Centre for Environment Studies (CES), TRIFED and Padi Foundation, we have continued playing the role of catalyst addressing focal issues of poverty, social welfare, livelihoods security, women centered issues and forest conservation.

While our successes confirm our belief in the path we have taken, we are continually reminded of the need to think and act bigger. Such thought gives me pride for our staff, members of general body and community for their dedicated contribution, commitment and sustained work.

And at the same time, we appeal to the leaders from local to global visit us – we're open to learning. Your passion and association could connect and then establish possible support system enabling many lives further.

Prasant Muduli

Secretary-cum-Executive Director



Women leads the Path to Strengthening Livelihoods



Women play central both to social and economic life. A woman in rural India contributes up to 70% to agricultural livelihoods, but still remain invisible. It is they, who care the social life at home from fetching water to collecting fuel & fodder; and are toiling day in and day out in the fields - nurturing the seeds to storing the harvest. When it comes to animal husbandry, women contributions are further increased. However, women's presence as farmers is unrecognized.

NYDHEE, however, believes in women's ability and their potential to leading dignified life with improved family economy. During 2015-16, in Bangriposhi Block, Mayurbhanj district, it has reached to 1490 marginalized families across 70 villages in partnership with Heifer International (India) with an intervention model - "To bringing 5000 small holders from a state of poverty and vulnerability to sustainability & resilience through pro-poor value chain approach focusing on two critical aspects: (1) Empowering and Institutional Strengthening, (2) Sustainable Production and Marketing System.





Highlights of 2015-16:

- Reached to 100 numbers of women SHGs with goat support and related techno-management skills
- 6 PMC formed at cluster level to plan strategies and conduct M&E
- 1030 women got trained in Kitchen Gardening & Livelihoods
- 350 women have been trained on Backyard Poultry for supplementary economy
- 28841 numbers of goats were supported with nutrition & health kits/package
- 650 numbers of goat sheds have been constructed for healthy environment
- 411 numbers of azolla tanks were demonstrated successfully with women participation & technology transfer
- 7 numbers of health camps have been organized for small ruminants
- 15239 numbers of households were covered for extended health support - deworming, vaccination against worming & Fowl Pox vaccination to 34831 (average) numbers of poultry birds

The forest dwelling communities mostly dependant on forest products which are largely seasonal. At least, 65% of their household economy is hovering around the forest across various seasons. However, due to conventional harvest practices coupled with lack of preservation options and marketing knowledge, they do receive almost 40% (average) lower price.

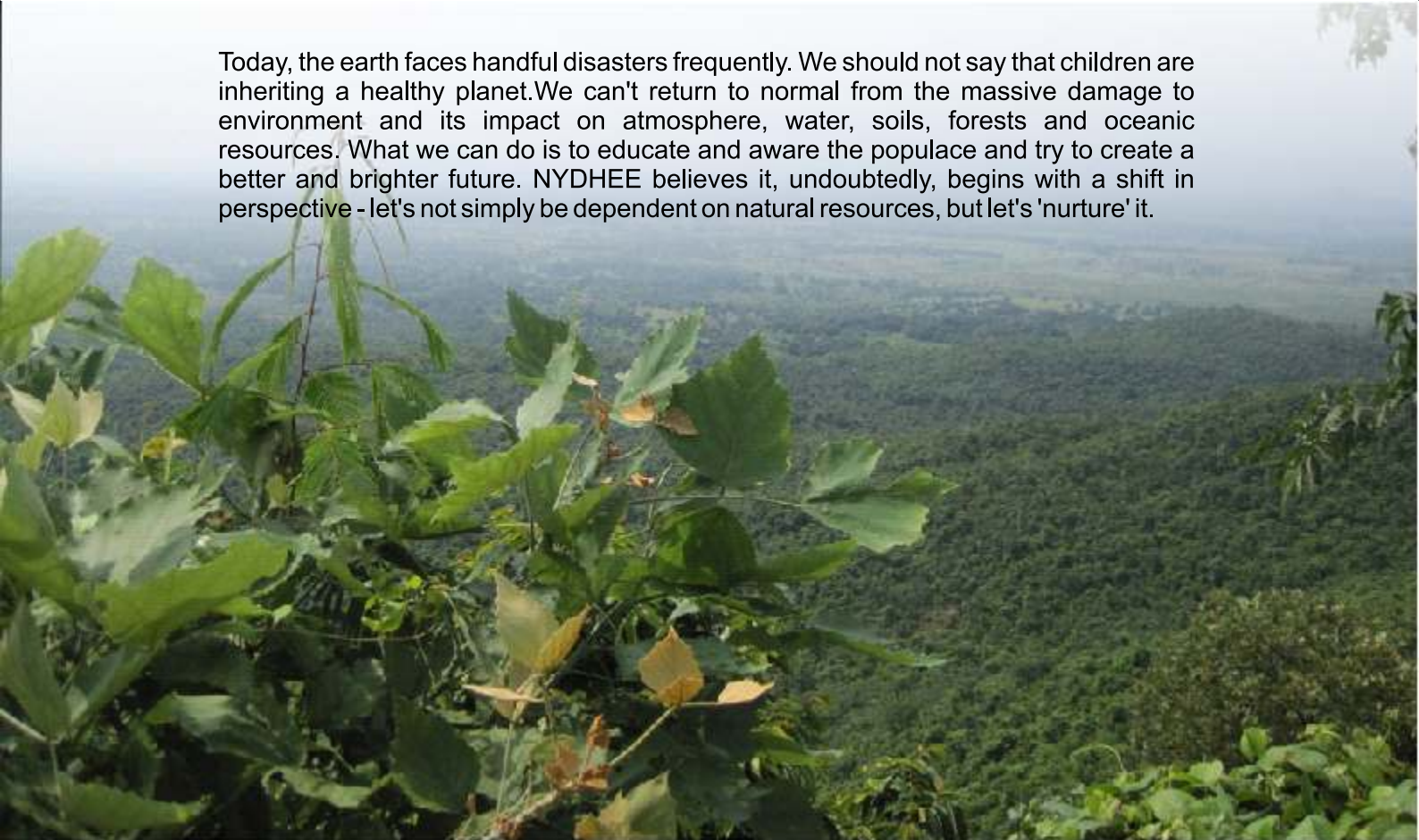


Therefore, NYDHEE facilitated trainings for the community women, central to household economy and forest collectives on sustainable harvest of forest produces and how to preserve it for prolonged periods for better marketing options.



Children stands for Forest Conservation with Community

Today, the earth faces handful disasters frequently. We should not say that children are inheriting a healthy planet. We can't return to normal from the massive damage to environment and its impact on atmosphere, water, soils, forests and oceanic resources. What we can do is to educate and aware the populace and try to create a better and brighter future. NYDHEE believes it, undoubtedly, begins with a shift in perspective - let's not simply be dependent on natural resources, but let's 'nurture' it.



During 2015-16, NYDHEE initiated a Children centric environment conservation programme approach with support from Konings school/Both Ends- which carry children's enthusiasm, imagination and energy to learn, interact and communicate the same through local actions. The children's positive feeling and love for nature coupled with NYDHEE's facilitation have together brought awareness among the local communities, education on environment issues for all and promotion of forest through plantation.



Highlights of 2015-16:

- Initiated a plantation drive with children as "One Child One Plant" and facilitated plantation over 20 acres of fallow land
- Children prepared "My Forest - A Herbarium" detailing the forest species available in their local forest
- We have developed a manual - "Children's Manual on How I Could Protect My Forest", a book could be referred by both practitioners and trainers
- Members of 10 Van SurakshyaSamiti (VSS) along with Forest Department protected 2500 acres of forest area around their respective villages
- Facilitated plantation over 100 acres through community led approach

NYDHEE, in association with Centre for Environment Studies (CES), an institution under Ministry of Environment & Forests, Government of India together with the community reached to farmers and youth members of Tangi block in Khurda district building awareness on causes of soil erosion and its impact. Under the National Environment Awareness Campaign (NEAC), this association has also demonstrated 'gully ploughing' options in order to check soil erosion.



NYDHEE in partnership with Padi Foundation facilitated awareness programmes among fishery folks, village leaders, students, teachers and people's representatives through PRA exercises and institutions building. In addition, we have facilitated trainings for 60 women from forest dwelling villages on 'Sustainable Harvest & Preservation of Forest Produces'.

We have celebrated International Forest Day with the Bholagadia Forest Protection Committee - we discussed the socio-cultural significance of forest with its ecological values. Community members from 10 villages participated in the interactive session and shared their views on how they do protect their peripheral forest coverage.



Appropriate WASH for Healthy Living



In appropriate water & unhealthy sanitary practices seem to be common among the rural to urban communities. Although the Indian and Odisha Government has used resources and continues to help alleviate this situation, on the ground the population clings to age-old cultures. They do not have proper access to safe drinking water and the scenario further intensified due to open defecation. Water borne diseases are found to be common; however, the health problems further add economic burden to the marginal-small families.

The unhygienic lifestyle is mainly due to a lack of understanding about the need for hygiene and sanitation and a general lack of awareness about the best way to improve their position; as a result, enjoy better health.



During 2015-16, NYDHEE with support from Japan Water Forum (JWF) organized two phases of health awareness consultations and established Community Sanitary Block, a community toilet system in MaaTarini (urban) slum in Gandamunda, Bhubaneswar. Besides, NYDHEE has mandate of sharing on 'Basic health and hygiene aspects' during each of its discussions across the projects and regions.

NYDHEE has been promoting adequate Water and Sanitary Hygiene measures across the urban and rural habitats. In addition, it also demonstrates street plays in the most affected villages in order to sensitize people to 'practice safe and live safe'.



Capacity Sharing for Leading Self &Enabling Others

NYDHEE believes in sharing capacities of individuals and groups among all. For which, the organization has been facilitating learning-sharing platforms - orientation, training, workshop and exposures that enables the community members to further sharpen their understanding.





NYDHEE, during 2015-16, facilitated ranges of trainings from group (SHG) managements to institutional building (VSS); from indigenous approach to technological interventions; from children to elders and from homestead landscape to wider villager peripheries. All the trainings cum mutual sharing have supported the community members - both men and women - enabling them to lead and influence others to lead on issues like livelihoods, forests, environments, education, water & sanitation and in turn developing harmony in society.



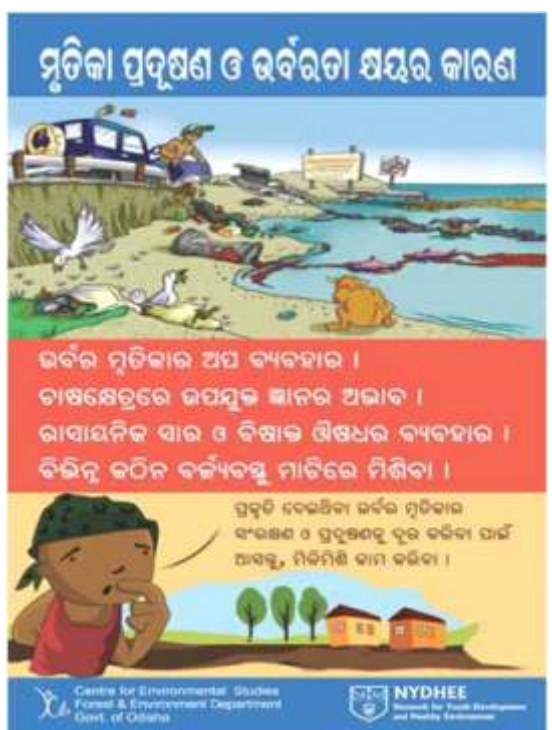
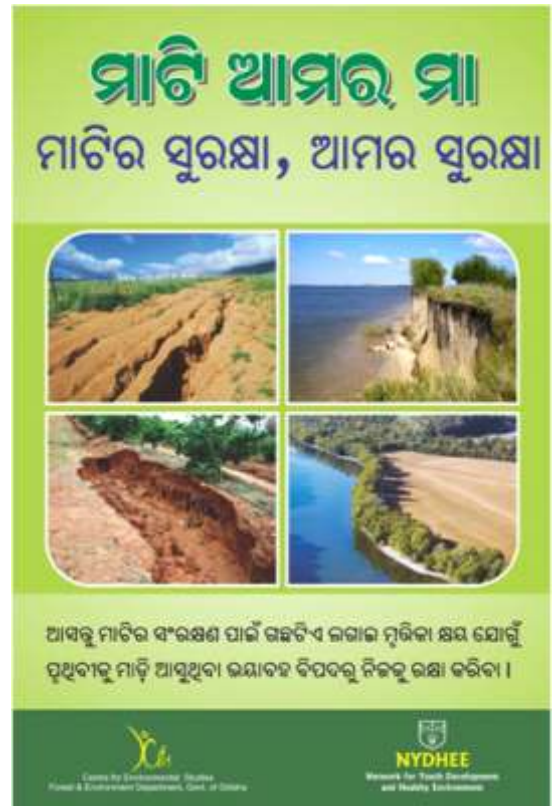
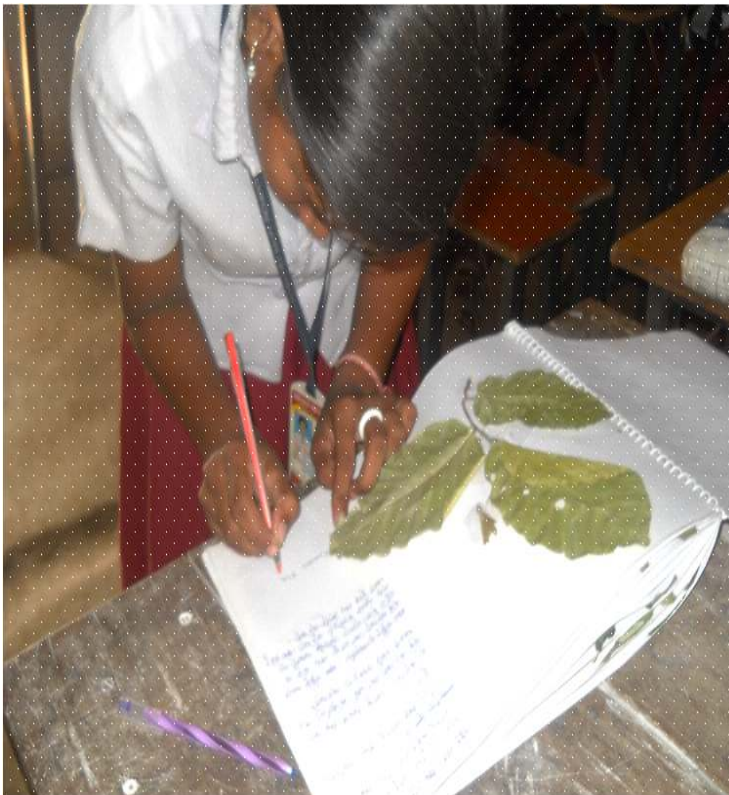
NYDHEE, being paying pioneer in spreading awareness on environment issues and forest conservation approach has facilitated training for 60 community women on 'Sustainable harvest of forest products and its preservation'.

Highlights of 2015-16:

- 2060 numbers of SHG management trainings were imparted for nearly 30900 women across rural communities
- The trainings have resulted in regularising the bank accounts of dormant SHGs; a net savings of INR 47.9 Lac has been calculated by 324 SHGs
- A total of 2860 men were trained on 'Gender Mainstreaming' through 143 numbers of trainings
- The facilitations were led to developing 170 numbers women who lead their groups including all sorts of conflict resolution strategy
- Each village has at least 3 men and 4 women who are able to articulate their village specific problems with targeted solutions
- Nearly 18750 families have been equipped with organic ways of farming practices and able to articulate the same
- There are 35 pro-active vaccinators developed across 139 villages



Our Resources



We've also prepared "A Children's Manual on How Do I Protect My Forest?"



Who We Are?



In the year 2000, few committed youth volunteers decided to streamline their efforts devoted for under-privileged section of the society; and then, Network for Youth Development & Healthy Environment (NYDHEE) was established on the eve of National Youth Day. Registered in 2001, NYDHEE is a not-for-profit organization, has been working with the agenda of empowering lives facilitating an institutional process for sustainable development.

NYDHEE believes that appropriate and multi-lateral development in the society could be established through community participation, especially youth. With adequate facilitation, local youth can be the best managers of the local resources and possess the time tested knowledge for its sustainable use with ecological approach.

Since its inception, NYDHEE works through Research Studies and Field Demonstration Interventions. The organizational core strength lies in its significant community led livelihoods generation activities at grassroots, its participation in research studies based on ground experience, the passionate board & competent team and its highest stake to remain transparent and accountable as an organization.

**VISION**

A society where the people believe in participation strengthening the process of democratic governance

MISSION

Facilitating community institutions leading the process of sustainable development for uniform economy with environment friendly approach

Thematic Programmes & Geographical Coverage in 2015-16

Strengthening Livelihoods	It is to achieve food, nutrition and livelihoods security working along production to market, from traditional to modern eco-friendly technological interventions	70 village; Mayurbhanj,
Forest & Environment	Achieving better forest conservation system approach for healthy environment inheriting for up-coming generation	Mayurbhanj, Khorda - 4 villages - Tangi
Water & Sanitation	We focus on better livelihoods through better health and in turn achieving safe water & sanitation practices is equally imperative	Khorda -
Leadership Development	NYDHEE believes in societal participation in development process and hence, 'knowing' and 'let knowing' are crucial	Mayurbhanj, Khorda - Tangi - 7 villages

Board Members

Name	Position	Expertise
Ms. Renubala Swain	President	Social Work
Dr. Subrat Das	Vice-President	Disability; Local Self Governance
Mr. Prasant Muduli	Secretary cum Executive Director	Water & Sanitation; Forest & Environment
Mr. Neeraj Mishra	Treasurer	Social Work
Ms. Swagatika Panigrahi	Member	Social Work
Mr. Pratap Pattanaik	Member	Social Work
Dr. P Yoshadhara	Member	Gender issues



The Advisory Council

NYDHEE is proudly associated with highly following professional experts in their respective fields.

Mr David Goldsmith, Senior Consultant

David Goldsmith is a New York based Development Consultant with twelve years of experience in working with social service, youth, arts, and education based organisations. Mr. Goldsmith has expertise in developing fundraising plans, training of staff, grant proposal writing and research targeting government, foundations, corporate and individual funders.

He has successfully attained funding from private and government funders including: National Endowment for the Arts, The John D. and Catherine T. MacArthur Foundation, McKnight Foundation, Jerome Foundation, Target Foundation, General Mills Foundation, SURDNA Foundation, Lila Wallace-Reader's Digest Fund, and numerous other entities.

Mr Om Prakash Routaray, Consultant

Om Prakash has around 13 years of experience in research, consultancy, capacity building, program / project execution, M & E and allied project management functions. During his stint with Xavier Institute of Management, Bhubaneswar, he handled different projects sponsored by bi-lateral and multilateral international and national agencies like DFID, World Bank, UNDP, EU, NABARD, SIDBI, LWS, CAPART, CORDAID, MEMISA, MESIRIOR, CARITAS etc. His basic experience relates to rural infrastructure sectors (energy and environment), bio-diversity and adaptation research and rural decentralization. He has hands on experience in working with State Government, Central Government and private organizations. He was the team leader for strengthening rural decentralized governance system, and has developed the SEMF for the OCTMP. Currently, he is spearheading the Public-Private Community Partnership project in Orissa and has taken initiatives to prepare a model District Public Private Community Partnership (DPPCP) plan to improve capacities of local resource group, NGOs and local self government representatives at district and block levels.

Mr Bikash Ranjan Dash, Mentor

Governance, especially in the field of Public Administration Reform, Decentralization or local governance, Institutional reform, capacity development, rule of law, policy formulation, institutional development, People's participation and participatory planning, program and project management

Nilakantha Panigrahi, Advisor

Dr Panigrahi is a Faculty in Social Anthropology, Nabakrushna Choudhury Centre for Development Studies (an ICSSR institute), Bhubaneswar. He has been awarded with M.A., M.Phil, Ph.D in Anthropology and Bachelors Degree in Law from Sambalpur University, Orissa. He has worked with Danish International Development Agency (DANIDA) for a decade in different positions.

He has published 45 research papers in different national and international professional journals, completed 23 research reports funded by various international and national organisations such as the DANIDA, UGC, ICMR, World Bank, The Ford Foundation, ICSSR, Overseas Development Institute (ODI) London, Committee of Governors, IWMI-Ratan Tata Trust etc. On issues relating to tribal development, tribal livelihood, community health, disaster management, ethnicity etc. He has



authored 3 books. 'Trading Community of India: An Anthropological Study of Ethnicity' (2000), State, NGO and Disaster Management' (2005), and Indian Constitution and the Tribal of India (2006).

His areas of interest include Development Anthropology, Action Anthropology, Disaster Management, Tribal Livelihood, Ethnicity and Ethnic Problems, and Eco-Tourism.

Mr Pratap Panda, Advisor

A Biotechnologist by qualification and trained in Permaculture, Pratap is a development professional by passion. He holds a decade journey in scientific research, academic and social development sector, extensively trying to bring science for the society. He has exclusively been able to combine his experiences working with extreme rural communities, especially in Odisha (India) with learning-sharing platform. He successfully brings his 'being with community' approach in his thoughts, writings and in trainings.

Our Team

Name of the staff	Position
Mr. Prasant Muduli	Executive Director
Mr. Simanchal Pradhan	Project Coordinator
Mr. Kashiray Soren	Training Coordinator
Mr. Bhakta Charan Tunga	Cooperative Coordinator
Mr. Karunakar Mahanta	Animal Wellbeing Officer
Ms. Archana Sethy	Program Associate
Ms. Mamita Murmu	Program Associate
Ms. Subhalaxmi Jena	HR & Admin Officer
Mr. Bibekananda Sahoo	Finance Officer



Finance Statement

B C P & ASSOCIATES

CHARTERED ACCOUNTANTS



OFFICE :- MIG-II, BLOCK-5/13, BDA COLONY
C.S.PUR, BHUBANESWAR-751016
E-MAIL : bcp.associates@gmail.com
sidhartha.babuni@gmail.com, biprabbsr@yahoo.com
PHONE No. : 9938283125, 8895353174
8895886370, 09910234427, 9658339601

Auditor's Report

We have audited the attached Balance Sheet of **M/S Network For Youth Development and Healthy Environment (NYDHEE)** as on 31st March 2016, the Income & Expenditure Account and the Receipt & Payment Account for the year ended on that date annexed thereto. These financial statements are the responsibility of the management. Our responsibility is to express an opinion on these financial statements based on our audit:

1. We have obtained all the information and explanations, which to the best of our knowledge and belief were necessary for the purposes of our audit in the accordance with the generally accepted auditing practice. We have carried out such test and other procedures as we considered necessary in the circumstances as evidence supporting the amounts and disclosures in the financial statements, so far as appears from our examination of the books. In our opinion, proper books of accounts have been kept.
2. In our opinion and to the best of our information and according to the explanations given to us, the said accounts give a true and fair view in conformity with the accounting principles generally accepted in India.
 - a) In the case of the Balance Sheet, of the state of affairs of the above named institution as at 31st March 2016;
 - b) In the case of the Income and Expenditure Accounts, of excess of Expenses over Income of its financial year ended on that date;

For B C P & Associates
Chartered Accountants

CA. Sidhartha Sankar Patra, FCA
Partner
M.No-64086
Bhubaneswar
Date:-02/09/2016



H.O. :- MIG-II, Block-2/7, BDA Colony, C S Pur, Bhubaneswar - 751016
BRANCHES : Bhubaneswar (sidhartha.babuni@gmail.com ; Nayagarh (biprabbsr@yahoo.com)
Khandagiri (krish_venugopal@yahoo.com) ; Ghaziabad (siluparigrahi@gmail.com)

**Network For Youth Development and Healthy Environment(NYDHEE)****LB-422, Bhimatangi, Bhubaneswar.Odisha****Consolidated Balance Sheet As On 31/03/2016****Liabilities**

General fund	513,954.00	
Add: Excess of Income Over Expenditure	(115,902.42)	398061.58

Current Liabilities

Advance Received from MSED(HEIFER International)		0.00
Advance Received from (KOONINGSSHOOL)		42455.00
Unsecured Loan (HEIFER Paid to)		17523.00
Unsecured Loan		112615.00

Outstanding Expenses

Audit Fees		11500.00
Outstanding Liabilities on MSED Project		230000.00
Outstanding Liabilities		0.00
		<u>812154.58</u>

Assets**Fixed Assets**

Furniture & Fixture	67,807.00	
Add:Addition	112,310.00	
Less:Depreciation	18,012.00	162105.00
Computer	1,022.00	
Less:Depreciation	613.00	409.00
Books	9.00	
Less:Depreciation	7.00	2.00
Plant & Machinery	75,622.00	
Less:Depreciation	11,343.00	64279.00
Vehicle	29,627.00	
Less:Depreciation	4,444.00	25183.00

Current Assets

Security Deposit		11000.00
Cash in hand		39125.74
Loans & Advances		34736.10
TDS Receivable		54400.00
Cash at Bank		320080.00
	Federal Bank-12051	
	Federal bank-76544	17404.00
	BOI	77964.74
	Indian bank	3780.00
	ICICI Bank	252.00
	UCO Bank	1434.00
		0.00
		<u>812154.58</u>

For B C P & Associates
Chartered Accountants

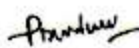
CA. Sidhartha-Sankar Patra
Partner

Membership No:- 064086

Place:- Bhubaneswar

Date:- 02/09/2016

For Nydhee


Secretary cum Director





Network For Youth Development and Healthy Environment(NYDHEE)
LB-422, Bhimatangi, Bhubaneswar.Odisha
Consolidated Income & Expenditure Account for the Year ended 31/03/2016

<u>Income</u>	Amount(Rs)	Amount(Rs)
<u>Grant Receipt</u>		
From PADI Foundation	186130.00	
From Kooningsschool	271715.00	
From Tetrattech	0.00	
Received From Sambandh	975.00	
Received from GALVMED	547743.00	
From CES	11000.00	
From HEIFER International	4896744.00	5914307.00
<u>Other receipt</u>		
Receive From General Fund	23015.00	
Membership Fees	700.00	
Members contribution	45000.00	
P P Contribution	191000.00	
Donation	890015.00	
Interest on Bank	42437.00	1192167.00
		<u>7106474.00</u>
<u>Expenditure</u>		
Tetrattech(Research & Evaluation Project)	60000.00	
Communities for Forest and Forest for Life	223002.00	
MSED Project(HEIFER International)	5885902.16	
National Environment Awareness Campaign	13365.00	
Wildlife Consevation Project (PADI Foundation)	206780.00	6389049.16
Organisation Contribution to Different Project		23015.00
<u>Payment in Nature of Other Program Activities</u>		
Climate Change	52412.00	
Water & Sanitation	39520.00	
Hunger & Malnutrition	53210.00	
Cultural activities	23560.00	
Natural Resource Management	31530.00	
Education and Literacy	24860.00	
Organic Farming & Sustainable Agricultural Promotion	77420.00	
Observation National days	18444.00	320956.00





Administrative Expenses

Fuel expenses	18630.00	
House rent	36000.00	
Meeting Expenses	15200.00	
Bank Charges	1329.26	
Newspaper & Periodicals	1488.00	
Project expenses	34005.00	
Staff Welfare	16800.00	
Office Expenses	7840.00	
FCRA Renewal Fees	506.00	
Printing & Stationery	15230.00	
Honorarium to Staff	240000.00	
Telephone Expenses	17679.00	
Training & Orientation Expenses	24500.00	
Travelling Expenses	14230.00	
Audit fees	11500.00	454937.26
Depreciation		34419.00
Excess of Income Over Expenditure		-115902.42
		<u>7106474.00</u>

For B C P & Associates
Chartered Accountants

CA. Sidhartha Sankar Patra
Partner
Membership No:- 064086

Place:- Bhubaneswar
Date:- 02/09/2016

For Nydhee

Secretary cum Director





Network For Youth Development and Healthy Environment(NYDHEE)

LB-422, Bhimatangi, Bhubaneswar.Odisha

Consolidated Receipt and Payment Account for the year ended 31/03/2016

Receipt

Opening Balance

Cash Balance		6,409.00	
Cash at Bank	Federal Bank-12051	1,055,661.00	
	Federal bank-76544	1,389.00	
	Indian bank	749.00	
	ICICI Bank	240.00	
	UCO Bank	1,379.00	1,065,827.00

Grant Receipt

From PADI Foundation	186,130.00	
From Kooningsschool	314,170.00	
From Tetrattech	306,000.00	
Received From Sambandh	975.00	
Received from GALVMED	547,743.00	
From HEIFER International	4,138,774.00	
From CES	11,000.00	5,504,792.00

Other Receipt

Receive From General Fund		23,015.00
Membership Fees		700.00
Members contribution		45,000.00
Donation		890,015.00
Interest on Bank		42,437.00
Unsecured Loan		15,000.00

Advances

Executive Director	45,500.00	
Simanchal Pradhan	12,000.00	
		<u>7,644,286.00</u>

Payment

Tetrattech(Research & Evaluation Project)	60,000.00	
Communities for Forest and Forest for Life	223,002.00	
MSED Project(HEIFER International)	5,493,902.16	
National Environment Awareness Campaign	13,365.00	
Wildlife Consevation Project (PADI Foundation)	206,780.00	5,997,049.16

Organisation Contribution to Different Project 23,015.00

Payment in Nature of Other Program Activities

Climate Change	52,412.00	
Water & Sanitation	39,520.00	
Hunger & Malnutrition	53,210.00	
Cultural activities	23,560.00	
Natural Resource Management	31,530.00	
Education and Literacy	24,860.00	
Organic Farming & Sustainable Agricultural Promotion	77,420.00	
Observation National days	18,444.00	320,956.00



**Administrative Expenses**

Fuel expenses	18,630.00	
House rent	36,000.00	
Meeting Expenses	15,200.00	
Bank Charges	1,329.26	
Newspaper & Periodicals	1,488.00	
Project expenses	34,005.00	
Staff Welfare	16,800.00	
Office Expenses	7,840.00	
FCRA Renewal Fees	506.00	
Printing & Stationery	15,230.00	
Honorarium to Staff	240,000.00	
Telephone Expenses	17,679.00	
Training & Orientation Expenses	24,500.00	
Travelling Expenses	14,230.00	
Audit fees Payable	6,742.00	450,179.26

Repayment of Loan

Outstanding Loan of tetrtech		246,000.00
------------------------------	--	------------

Loans & Advances

To Project Co-ordinator	2,478.60	
To Executive Director	2,755.00	
To Braja Gopal Behera	500.00	
To Karuna Kar Mohanta	29,000.00	
To Mayur Feeds	2.50	34,736.10

Purchase of Fixed Assets

Furniture & Fixtures		88,410.00
Fridge		10,200.00
Digital Camera		13,700.00

Closing balance

Cash		39,125.74
Cash at Bank	Federal Bank-12051	320,080.00
	Federal bank-76544	17,404.00
	BOI	77,964.74
	Indian bank	3,780.00
	ICICI Bank	252.00
	UCO Bank	1,434.00
		<u>7,644,286.00</u>

For B C P & Associates
Chartered Accountants

CA. Sidhartha Sankar Patra
Partner
Membership No:- 064086

Place:- Bhubaneswar
Date:- 02/09/2016



For Nydhee

Secretary cum Director

Our Partners



Stichting School van Z.M. Koning Willem III
en H.M. Koningin Emma der Nederlanden





Network for Youth Development and Healthy Environment [NYDHEE]
LB 422, Phase 2, Vimatangi, Kapilaprasad Bhubaneswar-751006, Odisha, India
Tele/Fax: +91 674 2593807 | Email: info@nydhee.org | Web: www.nydhee.org